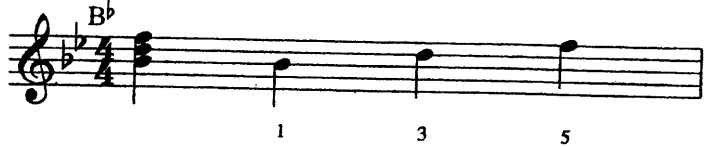


Enclosure in Major

Enclosure is a very common bebop concept and adds a great bebop sound to a line. Because these lines are based on a major triad they work on both the Major 7 and the Dominant 7.

This concept begins with the triad



Ex.1

Then we play above and then below the 5th



Ex.2

Then above and then below the 3rd



Finally above and below the root. Because this example has the b7 on a strong beat this would sound best on a Dominant 7th.

Ex.3



A solution for avoiding the dominant 7th sound is to enclose using the 3rd as well. Although this contains a natural 7th it works on both chords because the natural 7th is on the weak beat.

Ex.3a



Finally here is Ex.3 up the octave for playability.

Ex.3b

